

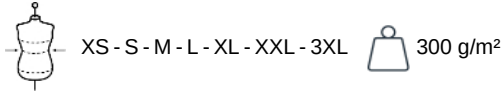
KARIBAN

K4011

Ladies fleece cadet jacket

- 3-yarn brushed fleece fabric with LSF treatment for an excellent printing surface, very hard-wearing and resistant in the wash.
- Comfortable, casual and everyday fashion garment.
- Detachable label for easy decoration access.

80% cotton/20% polyester. LSF (Low Shrinkage Fleece: pre-shrunk fleece) treatment. 3-yarn brushed fleece in combed cotton. Slim fit. Straight sleeves. High neck. Matching plastic zip fastening. 2 zipped and piped side pockets. Half-moon finish at the neckline to facilitate decoration access inside the neckline. 1x1 ribbed cuffs and hem. Tear-away brand label. Certified STANDARD 100 by OEKO-TEX® CQ1007/7, IFTH.



More information

Logistic



Country of origin

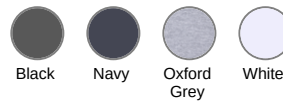


BD - Bangladesh

Customs code



61102099



Washing instructions



Also available in version



K4010

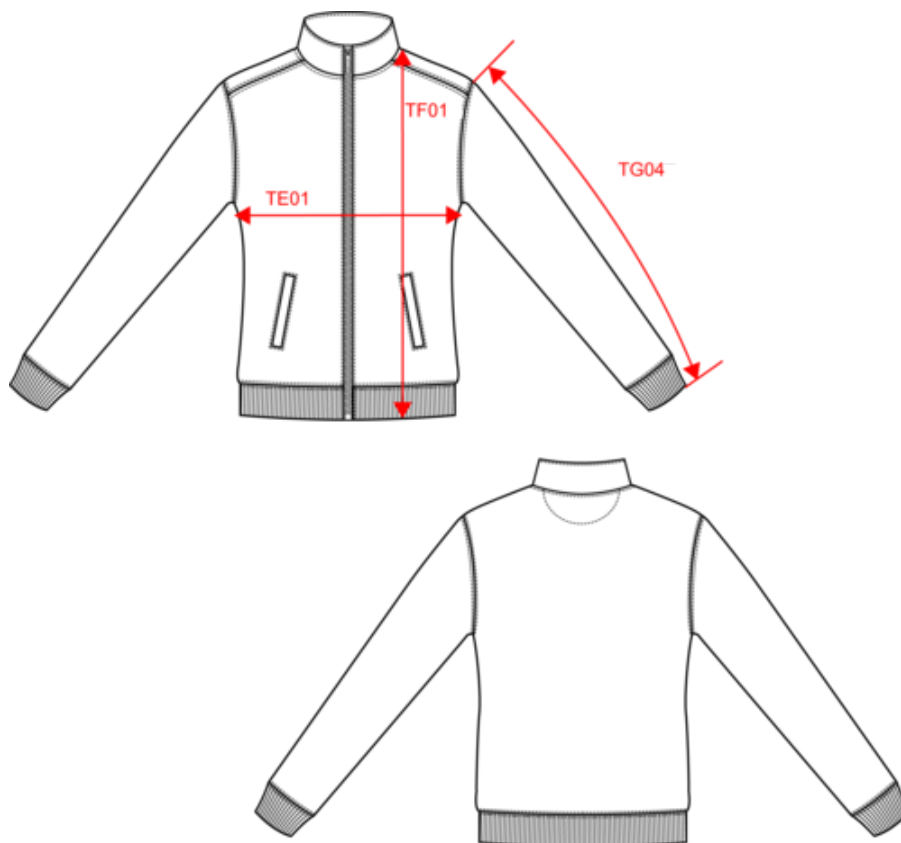


KARIBAN

K4011

Ladies fleece cadet jacket

Dimensions (cm)



Measurements in cm	XS	S	M	L	XL	XXL	3XL
TE01 - 1/2 chest width at 1.5cm below armhole	45.00	48.00	51.00	54.00	57.00	60.00	63.00
TF01 - Total height from HSP	61.00	63.00	65.00	67.00	69.00	71.00	73.00
TG02 - Long sleeve length	60.00	61.00	62.00	63.00	64.00	65.00	66.00

KARIBAN

K4011

Ladies fleece cadet jacket

Colours information



Black

RVB : 35,35,37
Pantone C : Black
Pantone TCX : 19-4004TCX



Navy

RVB : 41,46,56
Pantone C : 433C
Pantone TCX : 19-4012TCX



Oxford Grey

RVB :
Pantone C : Based on Cool gray 7C
Pantone TCX : Based on 16-3850TCX



White

RVB : 236,236,252
Pantone C : White
Pantone TCX : 11-0601TCX

Logistic



5



20

Sizes	Width (cm)	Height (cm)	Length (cm)	Net weight (kg)	Gross weight (kg)	Pieces/Box	Pieces/Bundle
XS	40.00	24.00	60.00	7.10000	8.50000	20	5
S	40.00	24.00	60.00	7.60000	9.00000	20	5
M	40.00	26.00	60.00	8.10000	9.50000	20	5
L	40.00	26.00	60.00	8.70000	10.10000	20	5
XL	40.00	26.00	60.00	9.00000	10.40000	20	5
XXL	40.00	28.00	60.00	9.60000	11.00000	20	5
3XL	40.00	28.00	60.00	10.20000	11.60000	20	5